

RADIAL LEADED POWER LINE CHOKES FAAIRD05 SERIES



FEATURES:

- High Saturation Material
- Polyolefin Shrink Tubing
- Low DC Resistance
- High Reliability Low cost

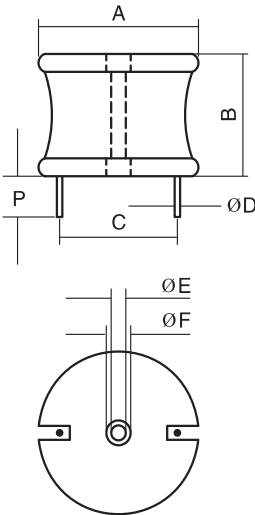
OPTIONS:

- Packaging: Tape & Reel is Standard (Qty: 1000 pcs)
- Bulk packaging available for smaller quantities
- Tolerance: 10% is standard tighter tolerances available.

COMMON APPLICATIONS:

- Switching Regulators
- RFI Suppression Filters
- Power Amplifiers
- Power Supplies
- SCR and Triac Controls
- Speaker Crossover Networks
- Automotive Systems
- Filters

PHYSICAL CHARACTERISTICS



DIMENSIONS: inches/mm

A	B	P[mm]	ØE	ØF
1.60/40.64	1.45/36.83	0.50/12.7	0.10/2.54	0.25/6.35

ELECTRONICAL SCHEMATIC



TECHNICAL INFORMATION

The AIRD-05,06,07,08 Series of Power Line Choke is available in 367 standard values covering a wide range of inductance and current. The use of high saturation flux density material make these coils ideal for use in switching regulated power supply applications and wherever high current choke values in a small physical size are needed.

Inductance Testing: HP4284A, HP4285A or equivalent
 RDC: QuadTech 1880 Milliohm meter
 Rated Current: L value drop 10% typ. at IDC against its initial value
 Temperature rise 40°C Max Reference ambient temperature
 Solderability: 75% of the lead wire shall be covered
 Soldering Methods: Wave, Reflow
 Operating Temperature: -25°C to +85°C
 Storage Temperature: -55°C to +125°C
 Terminal bending strength: 24.5N Min
 Moisture resistance: ΔL/L ≤ ±10%

Note: All specifications subject to change without notice.

STANDARD SPECIFICATIONS

Part Number	L [μH] @1KHz	DCR [Ω Max]	IDC [A Max]	Dim C [Inches/mm] Approx.	Dim ØD [Inches/mm] Nom.
FAAIRD05-1R8M	1.8	0.002	35.0	1.11/28.194	0.102/2.60
FAAIRD05-2R2M	2.2	0.002	35.0	1.11/28.194	0.102/2.60
FAAIRD05-2R7M	2.7	0.002	35.0	1.11/28.194	0.102/2.60
FAAIRD05-3R3M	3.3	0.002	35.0	1.11/28.194	0.102/2.60
FAAIRD05-3R9M	3.9	0.003	35.0	1.11/28.194	0.102/2.60
FAAIRD05-4R7M	4.7	0.003	35.0	1.11/28.194	0.102/2.60
FAAIRD05-5R6M	5.6	0.003	35.0	1.11/28.194	0.102/2.60
FAAIRD05-6R8M	6.8	0.003	35.0	1.11/28.194	0.102/2.60
FAAIRD05-8R2M	8.2	0.003	35.0	1.11/28.194	0.102/2.60
FAAIRD05-100K	10.0	0.004	35.0	1.11/28.194	0.102/2.60
FAAIRD05-120K	12.0	0.004	35.0	1.16/29.464	0.102/2.60
FAAIRD05-150K	15.0	0.005	35.0	1.16/29.464	0.102/2.60
FAAIRD05-180K	18.0	0.007	27.0	1.16/29.464	0.094/2.40
FAAIRD05-220K	22.0	0.007	27.0	1.16/29.464	0.094/2.40
FAAIRD05-270K	27.0	0.008	27.0	1.16/29.464	0.094/2.40
FAAIRD05-330K	33.0	0.009	27.0	1.16/29.464	0.094/2.40
FAAIRD05-390K	39.0	0.010	27.0	1.16/29.464	0.094/2.40
FAAIRD05-470K	47.0	0.011	27.0	1.16/29.464	0.094/2.40
FAAIRD05-560K	56.0	0.013	21.0	1.16/29.464	0.094/2.40
FAAIRD05-680K	68.0	0.015	21.0	1.25/31.750	0.83/2.10
FAAIRD05-820K	82.0	0.017	21.0	1.28/32.512	0.84/2.10
FAAIRD05-101K	100.0	0.018	21.0	1.25/31.750	0.84/2.10
FAAIRD05-121K	120.0	0.022	17.0	1.16/29.464	0.075/1.90
FAAIRD05-151K	150.0	0.025	17.0	1.16/29.464	0.075/1.90
FAAIRD05-181K	180.0	0.035	13.5	1.10/27.94	0.067/1.70
FAAIRD05-221K	220.0	0.040	13.5	1.10/27.94	0.067/1.70
FAAIRD05-271K	270.0	0.044	13.5	1.10/27.94	0.067/1.70
FAAIRD05-331K	330.0	0.049	13.5	1.11/28.194	0.067/1.70
FAAIRD05-390K	390.0	0.070	11.4	1.15/29.21	0.059/1.50
FAAIRD05-471K	470.0	0.078	11.4	1.07/27.178	0.059/1.50
FAAIRD05-561K	560.0	0.105	9.0	1.07/27.178	0.055/1.40
FAAIRD05-681K	680.0	0.115	9.0	1.07/27.178	0.055/1.40
FAAIRD05-820K	820.0	0.127	9.0	1.12/28.448	0.055/1.40
FAAIRD05-102K	1000.0	0.176	7.2	1.12/28.448	0.047/1.20
FAAIRD05-122K	1200.0	0.195	7.2	1.12/28.448	0.047/1.20
FAAIRD05-152K	1500.0	0.274	5.5	1.12/28.448	0.043/1.10
FAAIRD05-182K	1800.0	0.302	5.5	1.13/28.702	0.043/1.10
FAAIRD05-222K	2200.0	0.338	5.5	1.16/29.464	0.043/1.10
FAAIRD05-272K	2700.0	0.459	4.5	1.02/25.908	0.039/1.00
FAAIRD05-332K	3300.0	0.642	4.0	1.02/25.908	0.035/0.90
FAAIRD05-392K	3900.0	0.699	4.0	1.14/28.956	0.035/0.90
FAAIRD05-472K	4700.0	0.775	4.0	1.14/28.956	0.035/0.90
FAAIRD05-562K	5600.0	0.843	4.0	1.14/28.956	0.035/0.90
FAAIRD05-682K	6800.0	1.15	2.8	1.06/26.924	0.031/0.80
FAAIRD05-822K	8200.0	1.26	2.8	1.16/29.464	0.031/0.80
FAAIRD05-103K	10000.0	1.74	2.0	1.13/28.702	0.028/0.70
FAAIRD05-123K	12000.0	1.92	2.0	1.13/28.702	0.028/0.70
FAAIRD05-153K	15000.0	2.17	2.0	1.13/28.702	0.028/0.70

Note: 1. K = ±10%, M = ±20%