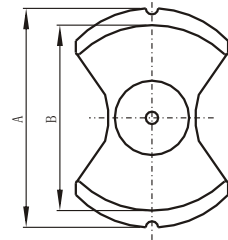
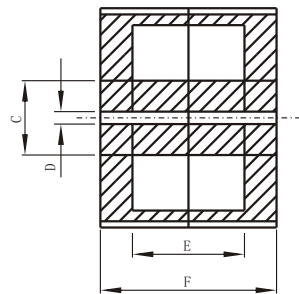
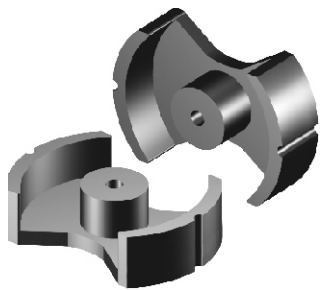


PM & UU TYPE CORES (Large Size)

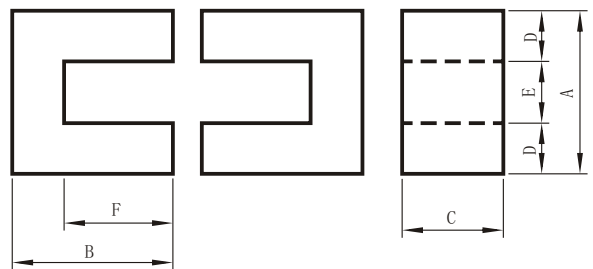
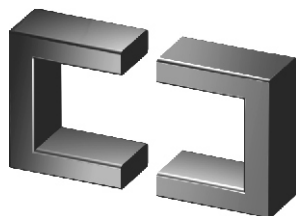


PM

PM TYPE CORES
(MATERIALS): P1, P2, P3
Dimensions & Effective parameter

CORES TYPE	Dimensions(mm)						Effective parameter					
	A	B	C	D	E	F	C1 (mm ⁻¹)	Ae (mm ²)	Le (mm)	Ve (mm ³)	Al ±25% (nH/N ²)	Weight (g)
PM50	49.15±0.85	39.65±0.65	19.7±0.3	5.5±1.0	26.8±0.4	38.8±0.2	0.227	370	84	31000	7700 (p3)	140
PM62	61.0±1.0	48.0min	25.0±0.7	5.3±0.3	33.8±0.6	48.8±0.5	0.190	570	109	62000	9700 (p3)	280
PM74	74.0±0.3	57.0min	29.0±1.0	5.4±0.3	41.0±0.8	59.0±0.6	0.162	790	128	101000	10000 (p3)	460
PM87	87.0±0.3	66.5min	31.0±1.5	8.5±0.4	48.4±0.8	70.0±0.8	0.161	910	146	133000	13000 (p3)	770
PM114	114.0±0.5	88.0min	42.0±1.5	5.4±0.4	63.8±0.8	92.5±0.5	0.116	1720	200	344000	16000 (p3)	1940

UU TYPE CORES
(MATERIALS): P1, P2, P3



UU

Dimensions & Effective parameter

CORES TYPE	Dimensions(mm)						Effective parameter					
	A	B	C	D	E	F	C1 (mm ⁻¹)	Ae (mm ²)	Le (mm)	Ve (mm ³)	Al ±25% (nH/N ²)	Weight (g)
UU64	65.0±1.5	63.5±1.0	40.0±0.5	20.0±0.5	24.4min	43.0±0.7	0.355	806	286	230000	7000 (p2)	1130
UU66	66.0±1.5	55.0±1.0	39.6±0.6	19.5±0.5	25.0min	36.5±1.0	0.343	759	260	197000	6800 (p2)	960
UU80	80.0±3.0	85.0±1.0	40.0±1.0	20.0±0.5	40.0min	65.0±1.0	0.543	801	435	348000	5500min (p2)	1600
UU93	93.0±2.0	76.0±1.0	30.0±0.6	28.0±0.6	34.6min	48.0±1.0	0.409	860	351	302000	5500 (p2)	1440
UU101	101.0±2.5	57.0±1.0	25.4±0.8	25.4±0.6	49.5min	31.95±1.0	0.484	637	309	197000	5060min (p2)	1000
UU120	120.0±3.0	117.5±1.5	40.0±0.8	30.0±0.6	59.0min	87.5±1.5	0.470	1200	564	677000	5200 (p2)	3300
UU126	126.0±4.0	91.0±1.0	20.0±0.8	28.0±0.6	68.0min	63.0±2.0	0.850	560	480	268800	2679 (p2)	1360