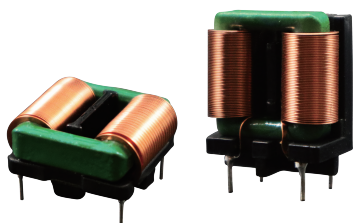


FRAME CORE CHOKES FOR POWER LINES

FACCF2118 SERIES

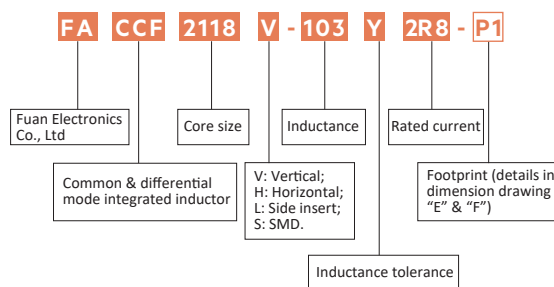


ELECTRICAL SPECIFICATION

- Rated voltage: 85~264 VAC
- Turns ratio: N1:N2=1:1±2%
- Hi-pot: 1500VAC/1mA/2second
- Operating temperature range: -40°C to+120°C
- Temperature Rise: 40°C Ref. at rated current
- All parts meet RoHS compliant
- Insulation grade: Class F
- Weight: 21.0g (reference)

FEATURES

- Small size, low leakage flux due to SQ core
- Low stray capacitance, high attenuation of a wide frequency band
- There is no danger of the layer short for the single-layer rolling
- High attenuation to the normal mode noise
- Winding time 90% down
- High inductance was achieved by the ferrite mixing and the baking technology that developed originally



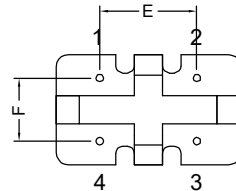
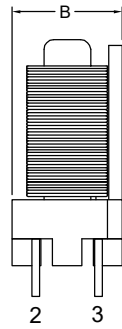
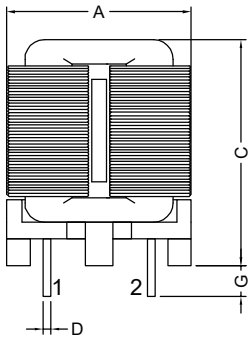
ELECTRICAL CHARACTERISTICS AT 25°C (V & H Series)

Part Number		Ind.(mH) 1KHz 0.25V Min	Lstray (uH) Typ	D.C.Resistance (mohms) Max	Rated Current (A)Typ	Wire (mm)
FACCF2118V-203Y2R8-□	FACCF2118H-203Y2R8-□	20.00	140	100	2.80	0.20*1.5
FACCF2118V-153Y2R8-□	FACCF2118H-153Y2R8-□	15.00	140	100	2.80	0.20*1.5
FACCF2118V-103Y2R8-□	FACCF2118H-103Y2R8-□	10.00	140	100	2.80	0.20*1.5
FACCF2118V-802Y2R8-□	FACCF2118H-802Y2R8-□	8.00	140	100	2.80	0.20*1.5
FACCF2118V-103Y4R0-□	FACCF2118H-103Y4R0-□	10.00	67	50	4.00	0.30*1.5
FACCF2118V-652Y4R0-□	FACCF2118H-652Y4R0-□	6.50	67	50	4.00	0.30*1.5
FACCF2118V-502Y4R0-□	FACCF2118H-502Y4R0-□	5.00	67	50	4.00	0.30*1.5
FACCF2118V-352Y4R0-□	FACCF2118H-352Y4R0-□	3.50	67	50	4.00	0.30*1.5

Product datasheet

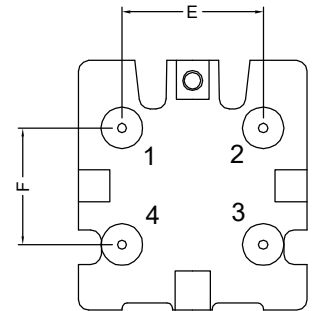
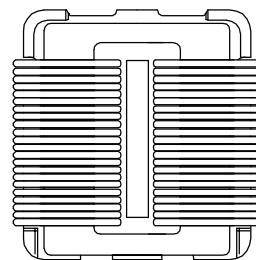
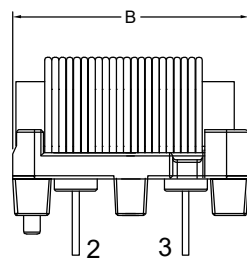
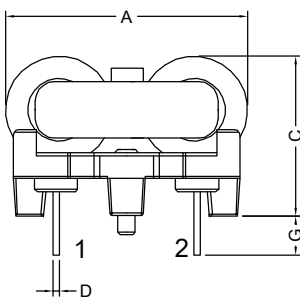
ELECTRICAL INFORMATION

Dimension in mm

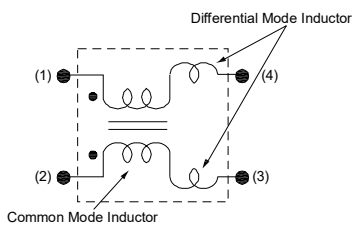


"V"

	A Max	B Max	C Max	D ± 0.1	E ± 0.5	F ± 0.5	G ± 0.5
-P1	25.0	14.0	25.0	0.80	13.0	10.0	3.50



"H"



Schematic

	A Max	B Max	C Max	D ± 0.1	E ± 0.5	F ± 0.5	G ± 0.5
-P1	25.0	25.0	15.0	0.60	13.0	10.0	3.50

Product datasheet

CURRENT VS TEMPERATURE RISE

